

Product Datasheet

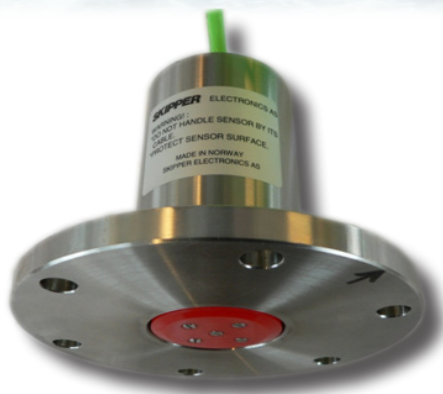
SKIPPER

**EML224ST LOG SENSOR FOR TANK
COMPLETE EML224, 40mtr SKIPPER**

**Art. No.
EML224ST**

**Log
Sensor**

EML



1* or 2 axis electromagnetic Speed Sensor with additional water temperature sensor. Measures speed through water (STW) in transversal* and longitudinal axis. This mounting can be used in the ETNSTC tank series.

Main Functions:

**Speed through water (STW)
Water Temperature
Distance through water
2 NMEA outputs
1 NMEA input
Nominal 24V power**

Applications:

EML sensor to provide a EML speed in two axis for speed through water.

Usage:

To be used with SKIPPER EML224 system.

*Single Axis version does not have transversal values.

SKIPPER Electronics manufacture marine electronics for the merchant fleet as well as the fishing fleet, based on experience, research and tradition. Our products are known worldwide for reliability, sophistication and good value for money.

Product Datasheet

SKIPPER

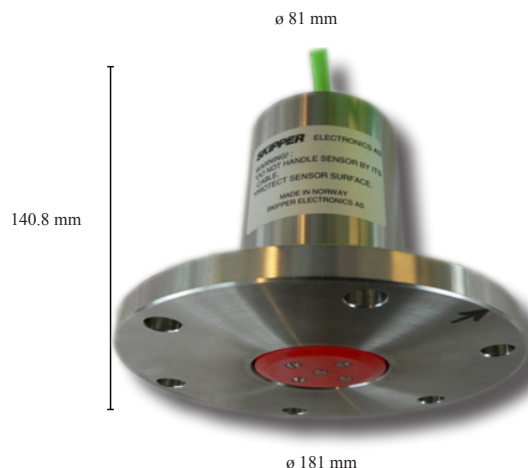
EML224ST LOG SENSOR FOR TANK COMPLETE EML224, 40mtr SKIPPER

Specifications

	Part number	Description
Part number	EML224ST-SD	LOG SENSOR FOR TANK COMPLETE EML224, 40mtr SKIPPER
To be used with	EML224N CD401E1 CD401E2 CD401EB JB60N2 JB-60CD	EML224 DUAL AXIS LOG CABINET CD401, Operating Unit for EML224 Single Axis SKIPPER Log CD401, Compact Operating Unit EML224, Dual Axis, SKIPPER CD401, SKIPPER 2 Axis EML with Backwards Option
The Sensor contains	EML224S TC-2009 ZOA-01003 ZOA-01005 ZOA-01008 ZOA-01009 ZOA-01016 ZOA-01017 ZOA-01018 ZOA-01045 ZOA-01150 ZZA-01127	Sea Valve 60 mm, Sensor Adapter, for XB-60-XA SENSOR MOULDED EML224-Ungrounded, 40 m cable. No adaptor. LOG, TANK ADAPTER, for sensor EML224ST-xD Allen key 911/M6 Special wrench/tool TC-2012 Rubber gasket Ø23,5/12,5x15 mm SB-6029 Washer stainless DIN125/A-13/A2 M12 Allen screw M8X16/912/A4 6knt Bronze nut PG-Nipple TC-2013 Spring washer stainless M5 DIN 127B A4 Nitril O-Ring Ø5,33x59,69 mm Allen Screw M5x18 DIN912 A4 70 Metalised polyester laser label
Accuracy		0.2 kn or 2 % whichever is greater
Speed Resolution		0.01kn
Max speed		+/- 40kn
Temperature Range		-5 to +55 °C
Temperature accuracy		1 deg
Temperature resolution		0.1 deg
IP rating		IP 68
Depth rating		6 bar
Operating temperature		-15 to +55 deg
Outputs		2 x NMEA (Proprietary formats)
Input		1 x NMEA (Proprietary formats)
Power input		Nom. 24V (15V to 32V) 8W
Manufacturer		SKIPPER Electronics AS, Norway
Weight		11.2 kg



Height: 32 cm
Diameter of cable 11 mm



SKIPPER

SKIPPER Electronics AS
Enebakkveien 150
P. O. Box 151, Manglerud
0612 Oslo, Norway

E-mail: support@skipper.no
Tlf: +47 23 30 22 70
Fax: +47 23 30 22 71
Co. reg. no: NO-965378847 - MVA

www.skipper.no

Date: September 2011

Edition: 08092010